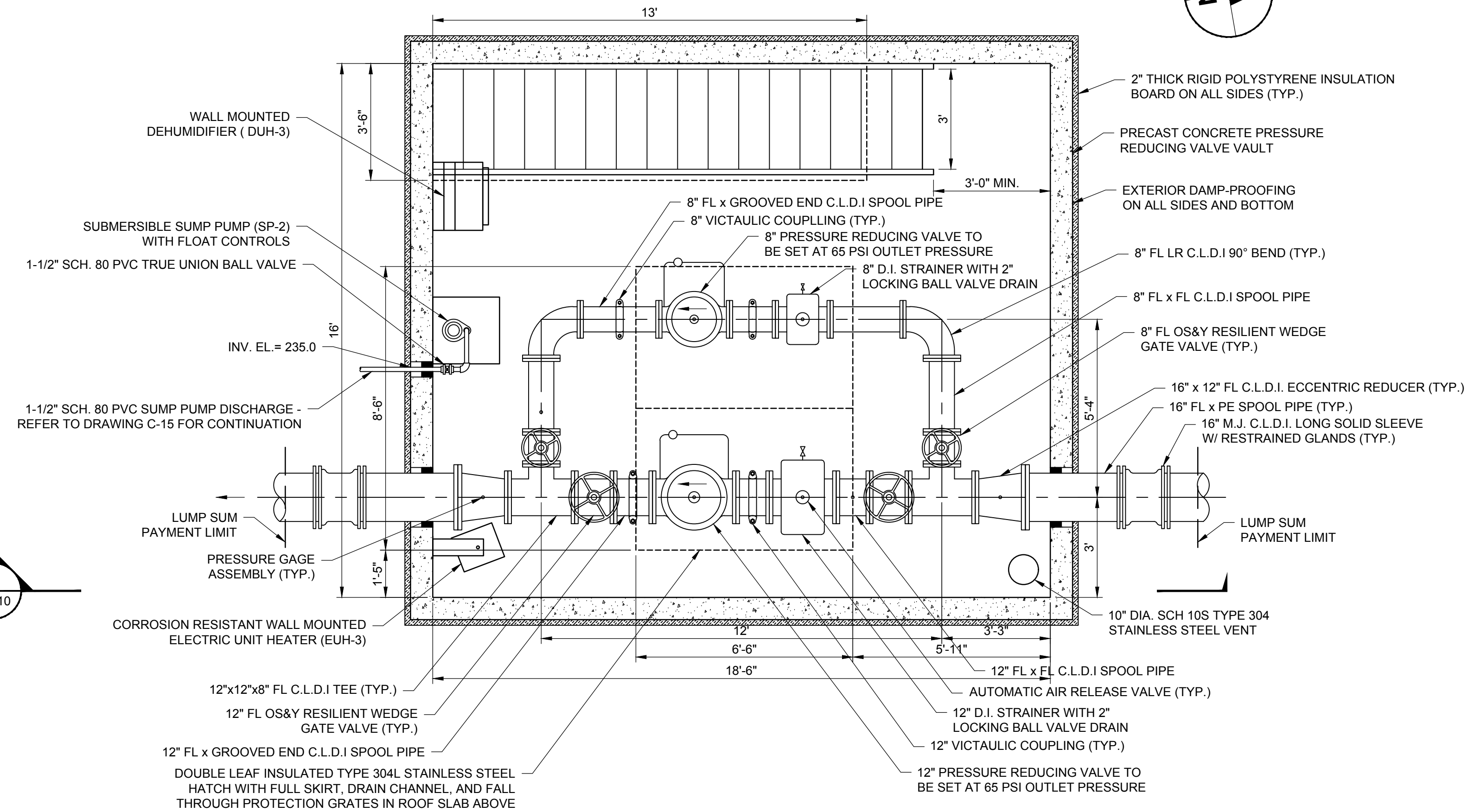
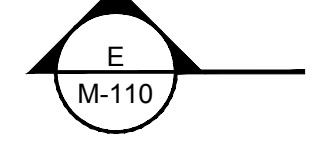
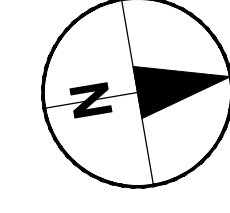
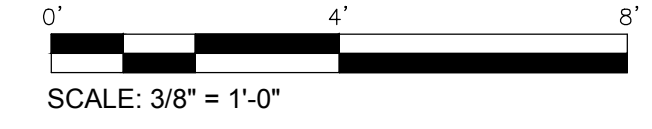
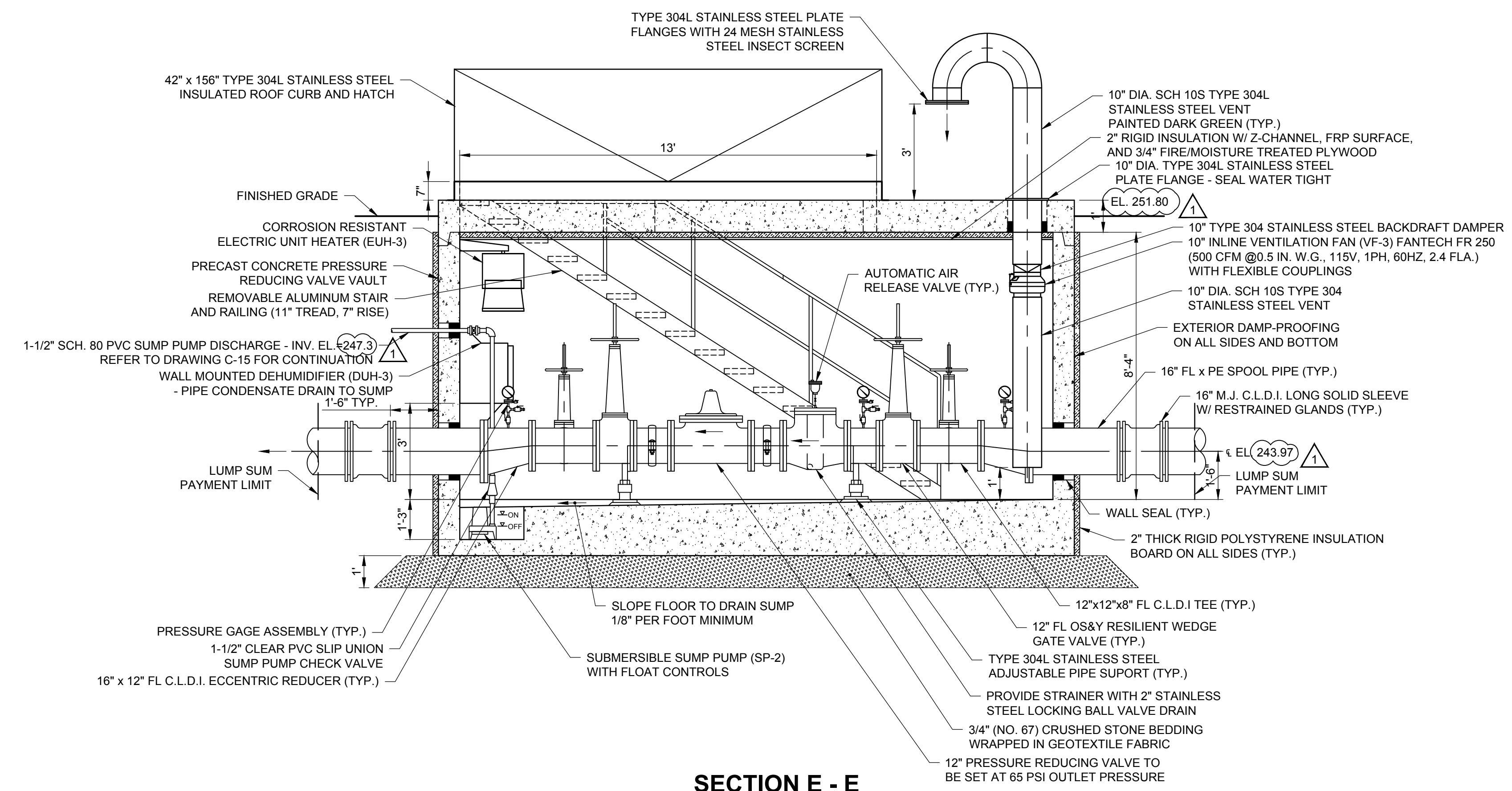


1 2 3 4 5



PLAN



SECTION E - E

SUBMERSIBLE SUMP PUMP (SP-2) CHARACTERISTICS
 ELECTRICAL: 115V, 1 PH, 60 HZ, 0.3 HP, FLA = 9.7 A
 PERFORMANCE REQUIREMENTS: 34 GPM @ 10' TDH
 PUMP ON AT 9.25' AND PUMP OFF AT 5' ABOVE SUMP BOTTOM
 DESIGN BASIS: ZOELLER PUMP MODEL M57
 PROVIDE 2\"/>

- NOTES:**
- REFER TO DRAWING C-15 FOR SITE WORK.
 - REFER TO DRAWING DI-7 FOR INSTRUMENTATION WORK.
 - REFER TO DRAWINGS E-7 AND E-8 FOR ELECTRICAL WORK.
 - REFER TO DRAWING M-501 FOR MECHANICAL EQUIPMENT SCHEDULES AND DETAILS.
 - PROVIDE TYPE 304L STAINLESS STEEL VENTILATION DUCT SUPPORTS.
 - PIPE HATCH CHANNEL DRAIN TO SUMP WITH SCH. 80 PVC PIPE AND FITTINGS

D
C
B
A

100% SUBMITTAL		REVISIONS	
		REV	DESCRIPTION
		REV	MAKE BY CHECKED
		DATE	MARK
AECOM, INC. 1000 PHILIP HENNING DRIVE FARMINGDALE, NY 11737 PHONE (860) 263-3800		REVISE PRV VAULT LOCATION MADE BY DATE MARK	
AECOM			
EPA CONTRACT NO. EP-SI-06-01 DURHAM MEADOWS WATERLINE RD DURHAM AND MIDDLETOWN, CONNECTICUT TASK ORDER NO. 0060-RD-RD-0105 TOWN OF DURHAM PRESSURE REDUCING VALVE VAULT MECHANICAL			
PROJECT NO: 60275749		A	
CAD DWG FILE: M-107-501			
DESIGNED BY: ASM			
DRAWN BY: ASM			
DEPT CHECK: GRS			
PROJ CHECK: M/W/M			
DATE: APRIL 2018			
SCALE: AS NOTED			
M-110			

ANSI D - 28-Mar-19

1 2 3 4 5